

# Water level forecasting and flood warning

Update on project 2-4 orientation

F. Anctil, A. Thiboult & M.A. Bessar  
Toronto – September 19, 2016

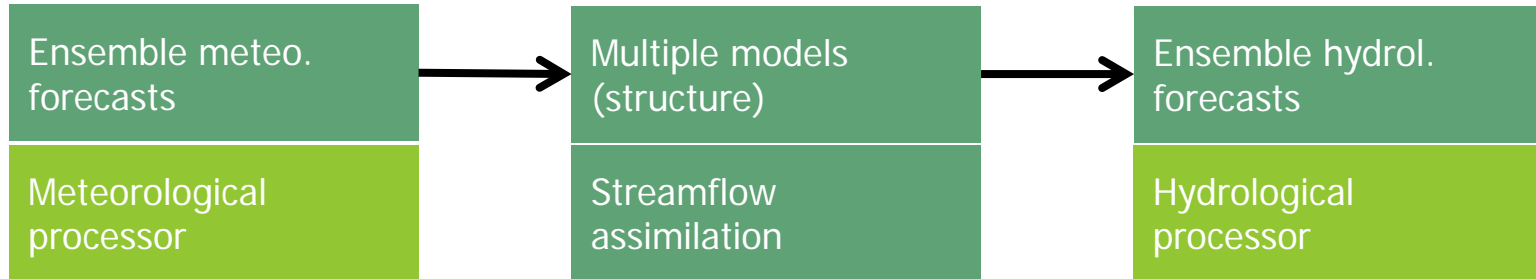


UNIVERSITÉ  
**LAVAL**

# Project 2-4

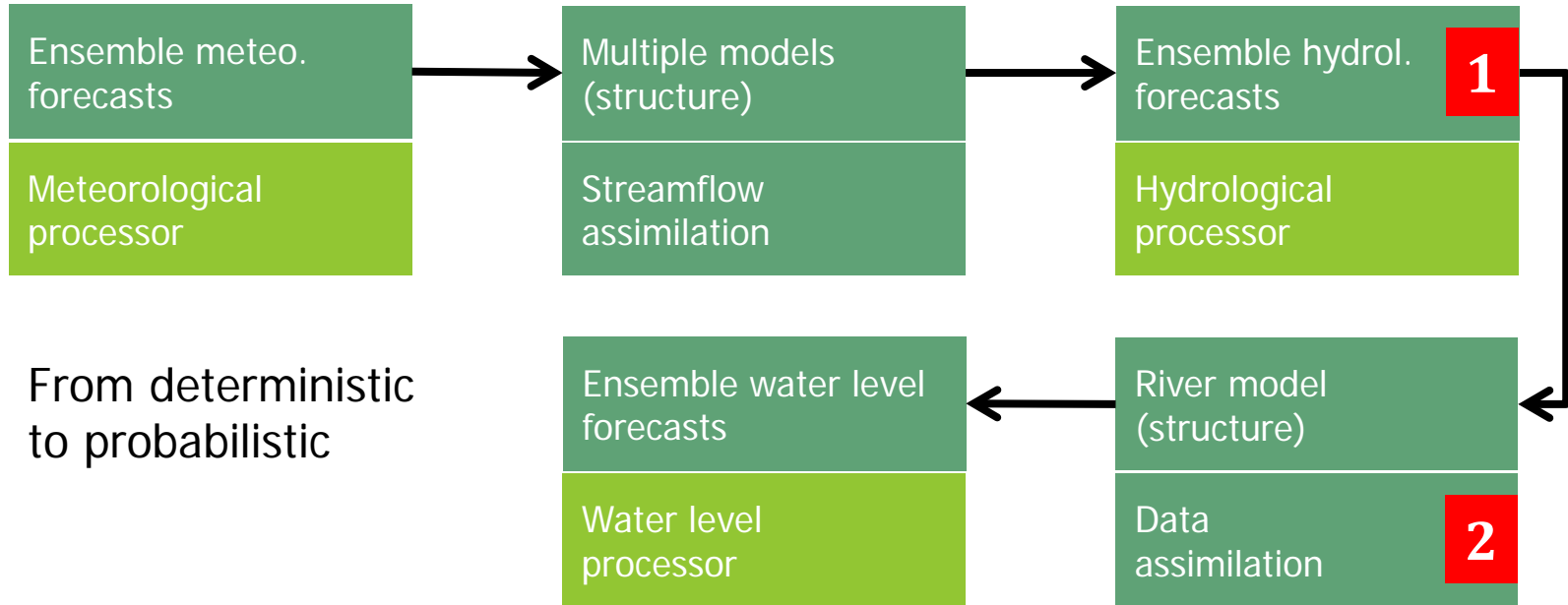
- Objective
  - Explore flood warning based on a hydraulic model with assimilation and hydrological ensemble forecasts, extending the hydrological ensemble prediction system tested in Project 2-2, with an additional vertical component

# H-EPS



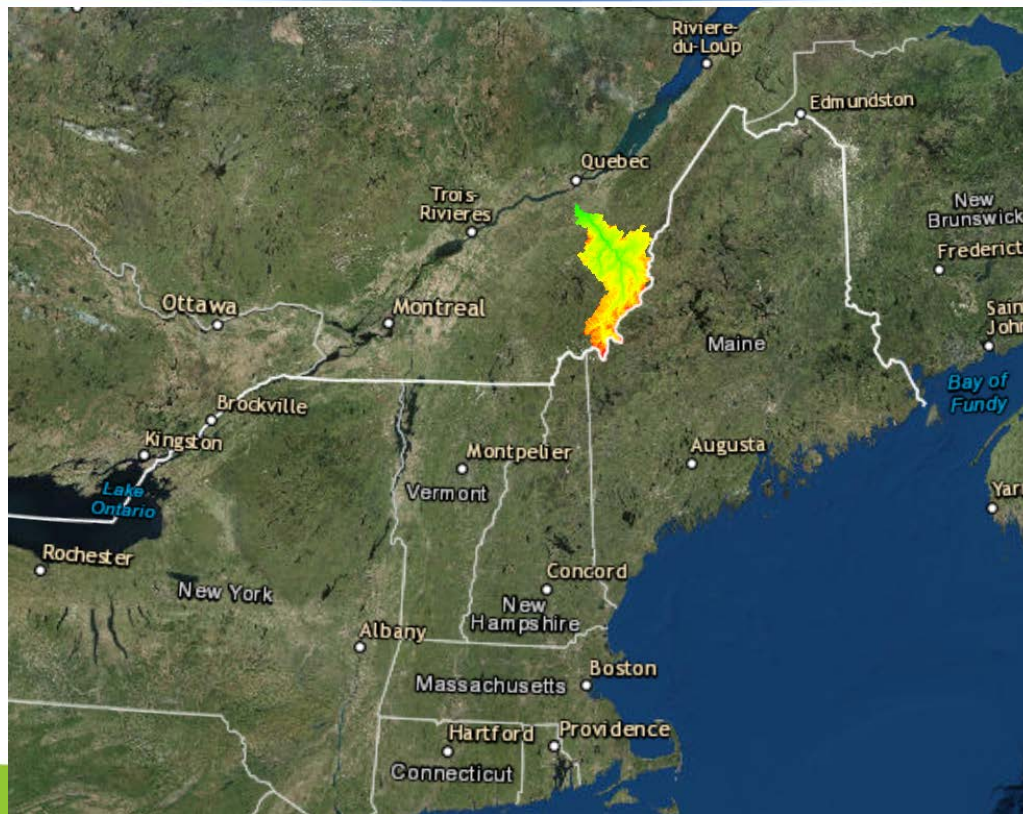
Hourly time-step

# WL-EPS



# Chaudière River

Area: 5822 km<sup>2</sup>  
Q<sub>mean</sub>: 115 m<sup>3</sup>s<sup>-1</sup>  
Q<sub>max</sub> > 2000 m<sup>3</sup>s<sup>-1</sup>  
Snow: 300 mm y<sup>-1</sup>  
P: 1100 mm



# HQPs

